

Nucala
mepolizumab



Using **NUCALA**

**Instructions for use for your
pre-filled autoinjector**

Please visit NUCALA.ca for more information

This brochure is intended for adults, adolescents (12-17 years of age), and caregivers of patients who have been prescribed NUCALA in the single-use autoinjector. For full information, please refer to the patient information leaflet that came with the NUCALA carton.

If you need to report an adverse event for any GlaxoSmithKline product, please call: 1-800-387-7374.

Always read the patient information leaflet before taking this medicine. If you have any questions, speak to your doctor, nurse, or pharmacist. If you think you may be having a reaction to NUCALA, stop taking NUCALA and seek medical attention immediately.

Let's go over the proper way to store your autoinjector

- Keep it refrigerated (2°C to 8°C) before use
- Keep it in the carton to protect from light
- Don't freeze or shake it
- If needed, you can keep the unopened carton out of the refrigerator, at below 30°C, for no more than 7 days, when stored in the original carton.
Discard if the unopened carton is left out of the refrigerator for more than 7 days
- Use within 8 hours once the carton is opened. Discard if not used within 8 hours
- Do not store it above 30°C

Things to remember

Do not use if the expiry date has passed.

Do not remove the needle cap until just before your injection.

Do not use the autoinjector more than once. Throw away the autoinjector in a sharps disposal container after your injection and

dispose of appropriately as per local requirements.

Do not use the autoinjector if it was dropped onto a hard surface or looks damaged.

Do not share the autoinjector with other people.

Keep NUCALA out of the reach of children

Gather supplies

Before you start, find a comfortable, well-lit, and clean surface.

Make sure you have the following ready:

- A NUCALA autoinjector



- An alcohol wipe (not included)



- A cotton ball or gauze (not included)



Do not perform the injection if you do not have all these items ready.

NUCALA offers the Vista Patient Support Program

We can help guide you

By enrolling in the Vista Patient Support Program, you get access to customized services, which may include:

- Reimbursement navigation
- Patient education and support
- Financial assistance
- Pharmacy services

Talk to your doctor for more information.

We're here for you along the way



Call 1-800-387-7374 if there are any problems with your NUCALA product.

You can also visit NUCALA.ca for more resources to help you with your treatment.

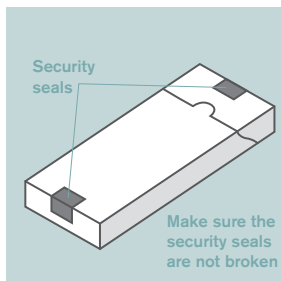
**Contact GSK Pharmaceutical inquiries
for more information at 1-800-387-7374 and do not
use the autoinjector if any of the below occur:**

- If the security seal on the carton is broken
- If the medicine is cloudy or discoloured, or has particles
- If the autoinjector looks damaged

1

Prepare

1. Take out your autoinjector



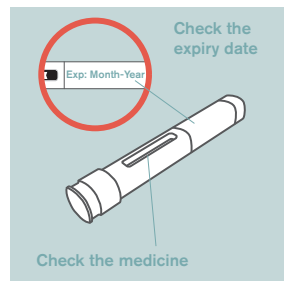
- Take the carton out of the refrigerator. Check the security seals are not broken.
- Remove the tray from the carton.
- Peel the film cover from the tray.
- Holding the middle of the autoinjector, carefully take it out of the tray.

Place the autoinjector on a clean, flat surface, at room temperature, away from direct sunlight and out of the reach of children.

Do not use the autoinjector if the security seal on the carton is broken.

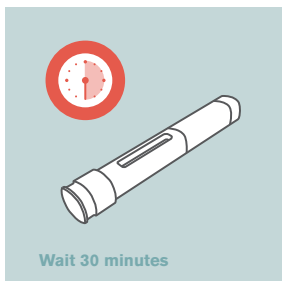
Do not remove the clear needle cap at this stage.

2. Inspect and wait 30 minutes before use



- Check the expiry date on the label of the autoinjector.
- Look in the inspection window to check that the liquid is clear (free from cloudiness or particles) and colourless or pale yellow or pale brown.
- It is normal to see one or more air bubbles.
- Wait 30 minutes (and no more than 8 hours) before use.

3. Choose your injection site



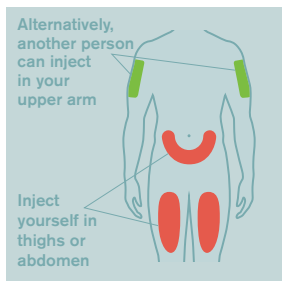
Do not use if the expiry date has passed.

Do not warm your autoinjector in a microwave, hot water, or direct sunlight.

Do not inject if the solution looks cloudy or discoloured, or has particles.

Do not use the autoinjector if it has been left out of the carton for more than 8 hours.

Do not remove the needle cap during this step.



○ You can inject NUCALA into your thighs or abdomen.

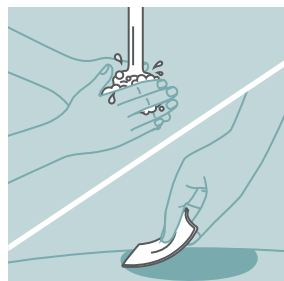
○ If someone else gives you the injection, they can also use your upper arm.

○ If you need more than one injection to complete your dose then leave at least 5 cm (2 inches) between each injection site.

Do not inject where your skin is bruised, tender, red, or hard.

Do not inject within 5 cm (2 inches) of your navel (belly button).

4. Clean your injection site



○ Wash your hands with soap and water.

○ Clean your injection site by wiping your skin with an alcohol wipe and allowing the skin to air dry.

Do not touch your injection site again until you have finished your injection.

5. Remove the clear needle cap

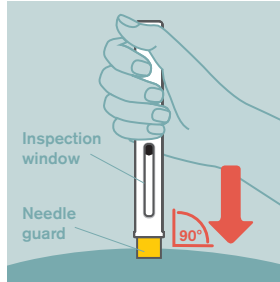


- Remove the clear needle cap from the autoinjector by firmly pulling it straight off.
- Do not worry if you see a drop of liquid at the end of the needle. This is normal.
- Inject right after removing the needle cap, and **always** within 5 minutes.

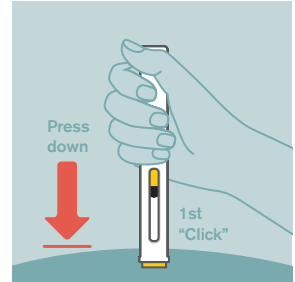
Do not touch the yellow needle guard with your fingers. This could activate the autoinjector too soon and may cause a needle injury.

Do not put the needle cap back onto the autoinjector, as it may accidentally start the injection.

6. Start your injection



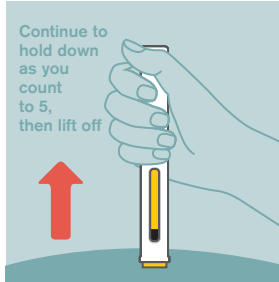
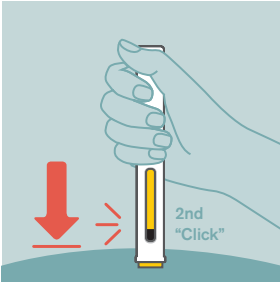
- Hold the autoinjector with its inspection window facing towards you, so you can see it, and with the yellow needle guard facing down.
- Place the autoinjector straight onto your injection site with the yellow needle guard flat against the surface of your skin, as shown.
- To start your injection, push the autoinjector all the way down and keep it held down against your skin. This will make the yellow needle guard slide up into the autoinjector.
- You should hear the first "click" to tell you your injection has started.
- The yellow indicator will move down through the inspection window as you receive your dose.



Do not lift the autoinjector from your skin at this step, as that may mean you don't get your full dose of medicine. Your injection may take up to 15 seconds to complete.

Do not use the autoinjector if the yellow needle guard doesn't slide up as described. Dispose of it (see Step 8), and start again with a new autoinjector.

7. Hold the autoinjector in place to complete your injection



- Continue to hold the autoinjector down until you hear the second "click", and the stopper and yellow indicator have stopped moving and fill the inspection window.
- Continue to hold the autoinjector in place while you count to 5. Then lift the autoinjector away from your skin.
- If you do **not** hear the second click:
 - Check that the inspection window is filled with the yellow indicator
 - If you are not sure, hold the autoinjector down for another 15 seconds to make sure the injection is complete

Do not lift the autoinjector until you are sure you have completed your injection.

- You may notice a small drop of blood at the injection site. This is normal. Press a cotton ball or gauze on the area for a few moments if necessary

Do not rub your injection site.

8. Dispose of the used autoinjector



- Dispose of the used autoinjector and needle cap according to local requirements.
- When your sharps disposal container is almost full, you will need to follow your community guidelines for the right way to dispose of it.
- For information about how to safely dispose of your autoinjectors and needle caps, speak to your healthcare professional or visit healthsteward.ca.*

Do not throw away your used sharps disposal container in your household trash unless your community guidelines permit this.

Do not recycle your used sharps disposal container.

Keep your sharps disposal container out of the reach of children.

*Healthsteward.ca is a third-party website that is not managed or monitored by GSK.

Safety information

NUCALA is a prescription medicine used in addition to other asthma medicines to treat adults and adolescents (12-17 years of age) with severe eosinophilic asthma, whose asthma is not controlled with their current asthma medicines, such as high-dose inhalers.

Do not use NUCALA to treat acute asthma symptoms, such as a sudden asthma attack, or if you are or your child is allergic to mepolizumab or any of the other ingredients of this medicine.

Before using NUCALA, talk to a healthcare professional if you or your child:

have had a severe allergic reaction with monoclonal antibodies before; are taking corticosteroids or other asthma medicines; have an existing parasitic infection, live in a region where parasitic infections are common, or if travelling to such a region; have not had chickenpox (varicella)

or shingles, or have not received a chickenpox or shingles vaccine; are pregnant, may be pregnant, or are planning to become pregnant; breastfeeding or plan to breastfeed; are taking or have recently taken medicines, including drugs or medicines obtained without a prescription (vitamins, minerals, natural supplements, or alternative medicines).

NUCALA should not be given to children under 6 years of age for the treatment of severe eosinophilic asthma.

Tell the healthcare team if asthma symptoms remain uncontrolled or get worse while being treated with NUCALA.

NUCALA can cause serious side effects, including allergic reactions. Serious allergic reactions can happen after taking an injection of NUCALA, but can sometimes happen hours or days later. **Stop taking NUCALA and seek medical attention**

immediately if you have or your child has any of the following symptoms of an allergic reaction: becoming very wheezy, cough, difficulty breathing, chest tightness; fainting, dizziness, suddenly feeling weak or lightheaded (due to a drop in blood pressure); swelling of eyelids, face, lips, tongue, mouth, and other areas of the body (angioedema), skin rash, hives, redness. If you or your child may have had a similar reaction before, tell the doctor before taking NUCALA.

The most common side effects of NUCALA

(may affect more than 1 in 10 people) include: headache, joint pain, sinus infection, cough, sore throat, runny nose, nasal congestion (upper respiratory tract infection), diarrhea, vomiting, back pain, rash, neck pain, mouth and/or throat pain, injection site reaction (pain, redness, swelling, itching, and burning sensation of the skin near where the injection was given).

***Common
questions***





Are there any injection site reactions?

Yes. Over 1 in 10 people who received NUCALA experienced injection site reactions including pain, redness, swelling, itching, and burning sensation of the skin near where the injection was given.

After removing the clear needle cap, how long do I have before I have to inject?

Inject right after removing the needle cap, and always within 5 minutes.

What happens if a dose of NUCALA is missed?

You or your caregiver should inject the next dose of NUCALA as soon as you remember. Then, you can resume dosing on the usual day of administration. If you do not notice that you have missed a dose until it is already time for your next dose, then just inject the next dose as planned. If you are not sure what to do, ask your healthcare professional.



***For questions
or concerns
about your product***

**Call GSK Pharmaceutical inquiries:
1-800-387-7374**

**Visit NUCALA.ca to watch the Instructions for Use video
for the NUCALA autoinjector.**

Nucala 
mepolizumab

Trademarks are owned by or licensed to the
GSK group of companies.
©2021 GSK group of companies or its licensor.

 MEMBER OF
INNOVATIVE MEDICINES CANADA



04320
04/21